



MILADA BLÁHOVÁ Those who read lifestyle magazines may remember her as Milada Čiřtinová. After having children, she went back to doing crafts, the hobby of her youth. Only now instead of making jewellery she makes silver flowers.

My world IS AN IMAGE in detail

INTERVIEW IN MAGAZINE KRASNY DOMOV TRANSLATED FROM CZECH TO ENGLISH

The woman creating delicate silver flowers uses a soldering iron, pincers, grinder, and scalpel as her tools. As a child, when she'd secretly draw horses and flowers during class she had no idea her silver bouquets would become a hit in the world of jewellery and floristry.

TEXT PAVLÍNA BLAHOTOVÁ FOTO ONDŘEJ KOŠÍK



SILVER BOUQUET: Daisies, cornflowers, snowdrops, and bellflowers look beautiful in any vase. Milada recommends combining them with their real or dried counterparts, turning the silver bouquet into an exclusive piece of interior jewellery.



1/DRAWING First, Milada sketches out the details of various flowers. To make the end result look real and as though it was turned silver by magic, it's important to give a lot of thought to proportions. **2**/DRAWING TOOLS Mostly pencils and charcoal of different grades.



At first, Milada made jewellery as a hobby. Years later, she now pursues it as a craft. During our interview, she recalled a childhood memory which involved sitting with her parents and brother around the kitchen table, each drawing in silence. "Love of drawing ran in our family on both sides; dad's grandpa originally wanted to study painting at the Academy of Fine Arts but for financial reasons chose medicine instead," she says. Her own love of arts was surpassed by a new hobby—at the age of 14 she broke the piggy bank to purchase her first horse. She'd be getting up at 3:45 a.m. to arrive at the Chuchle stables on time. And because her brother began making silver jewellery, Milada used his workshop to make horse-themed jewels. "Back then, all I wanted was to be around horses, and so the only thing I'd design were things which were somehow related to horses," she recalls. Thanks to her brother she learned about the technical side of production, but in terms of design she

enjoyed complete freedom. "I've realized that ever since I was a child I've viewed the world in details. When I look at a painted wall I see structures, fascinating images. That's why my later career as a photographer was so important to me because when you look at the world through the lens of a camera, you can capture a single second, preserve it as you like, and create an image that's slightly different than the reality," she explains. After fifteen years of taking pictures for lifestyle magazines and ad agencies, Milada went back to horses—and by that time, her horse-themed jewellery had been perfected.

TIME OF FLOWERS

In 2019, there was the idea to start making silver flowers—as a gift, decoration, or alternative to living flowers. Milada was inspired by her garden and the large amount of plants growing in the place she and her family call home. It was her husband who suggested she design .

FOTO: ONDŘEJ KOŠÍK



3/CORNFLOWER Combined with hare's tail grass and dried flax bolls. **4**/WORKBENCH Soldering iron, pincers, handsaw, files... equipment used by the woman making delicate silver interior jewellery. **5**/GIFT WRAP Milada also designed her own Giyou live gift boxes. **6**/SNOWDROPS Live snowdrops will soon be added to the silver ones.





1/CORNFLOWER STUDY The shape of leaves, front and profile view, proportions of the individual parts. 2/ WAX First, the flower is carved out of hard jewellery wax. 3/ UNDER THE LENS The softest details need to be fine-tuned under the magnifying glass. 4/WASTE If a leaf falls off, the process begins anew. 5/ CHARCOAL The wax model is blackened out to reveal any details in need of fine-tuning. 6/ GATE CLIPPING Large pincers for tiny blossoms. 7/ GRINDER Grinding and polishing makes the silver's beauty pop. 8/ COMPARISON The wax model and silver castings, before and after processing. 9/RUBBER MOULD The first silver model is moulded in rubber, resulting in a mould for making new flowers. 10/ HOT WAX The mould is filled with high-pressure hot wax to create another flower which is then cast using the lost-wax casting method.

design silver flowers. "At first I wasn't sure I could make silver appear as delicate as real flowers. I only knew those made by blacksmiths, ones I'd never display in my home. So I began making them the same way I would most of my jewels, using wax to create the first model. Of course, 3D technology is a thing nowadays but we wanted the entire flower to be handmade, for it to be unique and original, imperfections and all." The process of creating the first model entails studying the particular flower, as well as having a lot of patience and sense for detail... A new flower model can usually be launched within a month. Creating the wax model is the most labour-intensive part of the whole process. The flowers are made from silver of 925/1000 fineness and galvanised with silver of 999/1000 fineness to protect them. At the galvanizing works specialising in small jewellery there's a machine for weighing metal, like those used at scrapyards. "It was a strange feeling the first time, placing 1 kg of delicate silver jewellery on the scales and hoping they're accurate," Milada laughs. 🐘

Where you can learn more:
Take a look at the giyou.cz website

Win a silver flower!

Go to giyou.cz and tell us how many botanical species of silver flowers Milada's grown so far. Which flower do you like the most and why? Five of you who give us the correct and most interesting answer will win a silver flower! Send your answers to redakce@krasnyrok.cz or Krásný rok, Lopatecká 4, 147 00, Prague 4. The deadline is on February 2, 2023.

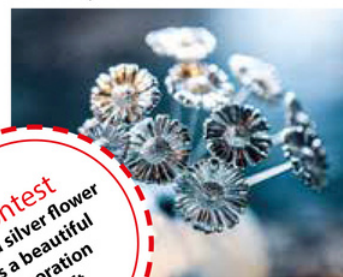


FOTO ONDŘEJ KOŠÍK